

Havelock Road

Maidenhead • Berkshire • SL6 5BJ

Guide Price: £900,000



coopers
est 1986

Havelock Road

Maidenhead • Berkshire • SL6 5BJ

A four bedroom detached chalet bungalow, situated on Havelock Road, a sought after residential road within close proximity to a number of local schools, leisure facilities, and green space. You are around a mile from Maidenhead railway station (Elizabeth Line/Crossrail) and close to the A308 and A404, giving good road access to the M4 and M40. The ground floor of the home comprises 12ft main bedroom, 12ft second bedroom, 19ft sitting room with a family shower room off of it, 18ft dining room, and a 15ft kitchen that leads to a 12ft utility room, which in turn leads to a 9ft workshop and a 19ft garage. To the first floor there is ample storage space along with the 13ft third bedroom, 10ft fourth bedroom and family bathroom. Outside there is a large driveway and large private rear garden which is mainly laid to lawn.

Four bedroom Chalet Bungalow

Detached

Sought after location

Two bathrooms

19ft sitting room

15ft kitchen & separate utility room

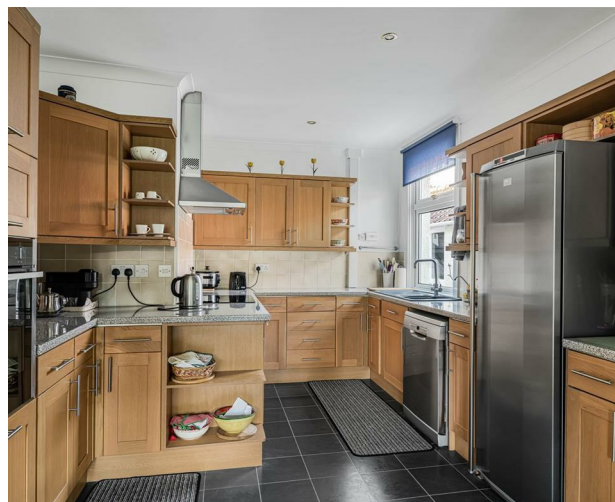
19ft garage

Closed Chain

Ample Driveway Parking

Private Large Garden

These particulars are intended as a guide and must not be relied upon as statements of fact. Your attention is drawn to the Important Notice on the last page.





**Approximate Gross Internal Area 2024 sq ft - 188 sq m
(Including Garage)**

Ground Floor Area 1486 sq ft – 138 sq m

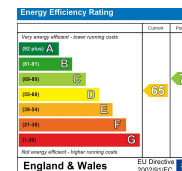
First Floor Area 538 sq ft – 50 sq m



coopers
est 1986

**42 Queen Street, Maidenhead,
, SL6 1HZ**
maidenhead@coopersresidential.co.uk

CoopersResidential.co.uk



Important Notice: These particulars, whilst believed to be accurate are set out as a general outline only for guidance and do not constitute any part of an offer or contract. Intending purchasers should not rely on them as statements or representation of fact, but must satisfy themselves by inspection or otherwise has the authority to make or give any representation or warranty in respect of the property.